



MünchenerHyp

Ecological ESG Pfandbrief

Quarterly reporting: 2. Q. 2021



Outstanding ESG Pfandbrief and related cover assets	3
Loan to value ratios	4
Maturity of cover assets	6
Mortgage loan by volume	8
Mortgage loan by region	10
Appendix	12

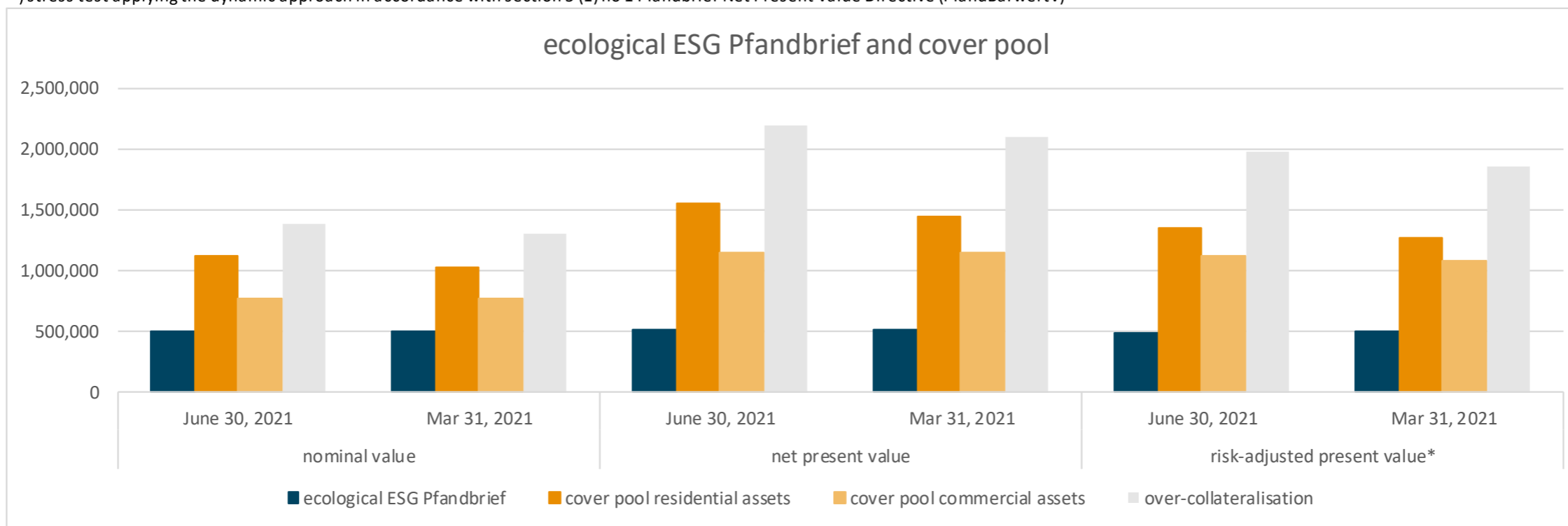
Outstanding ecological ESG Pfandbriefe and related cover assets



outstanding ecological ESG Pfandbriefe and related cover assets

€ thousand	nominal value		net present value		risk-adjusted present value*	
	June 30, 2021	Mar 31, 2021	June 30, 2021	Mar 31, 2021	June 30, 2021	Mar 31, 2021
ecological ESG Pfandbrief	500,000	500,000	510,441	510,190	491,957	496,604
cover pool residential assets	1,121,145	1,035,110	1,550,339	1,452,539	1,355,074	1,269,173
cover pool commercial assets	766,121	767,822	1,154,830	1,155,960	1,122,141	1,080,813
over-collateralisation	1,387,266	1,302,932	2,194,728	2,098,308	1,985,258	1,853,382

*) stress test applying the dynamic approach in accordance with section 5 (1) no 1 Pfandbrief-Net Present Value Directive (PfandBarwertV)



Loan to value ratios - residential



loan to value ratios - residential

LTV		< 30%	30% - 60%	> 60%
cover pool €		€ thousand	€ thousand	€ thousand
	June 30, 2021	39,646	561,293	520,206
	Mar 31, 2021	36,440	514,542	484,129

loan to value ratios residential
June 30, 2021



■ < 30% ■ 30% - 60% ■ > 60%

loan to value ratios residential
Mar 31, 2021



■ < 30% ■ 30% - 60% ■ > 60%

in the category loan to value >60% only the cover pool eligible part up to 60% is reported

Loan to value ratios - commercial



loan to value ratios - commercial

LTV		< 30%	30% - 60%	> 60%
		€ thousand	€ thousand	€ thousand
cover pool €	June 30, 2021	0	85,318	680,803
	Mar 31, 2021	0	85,462	682,360



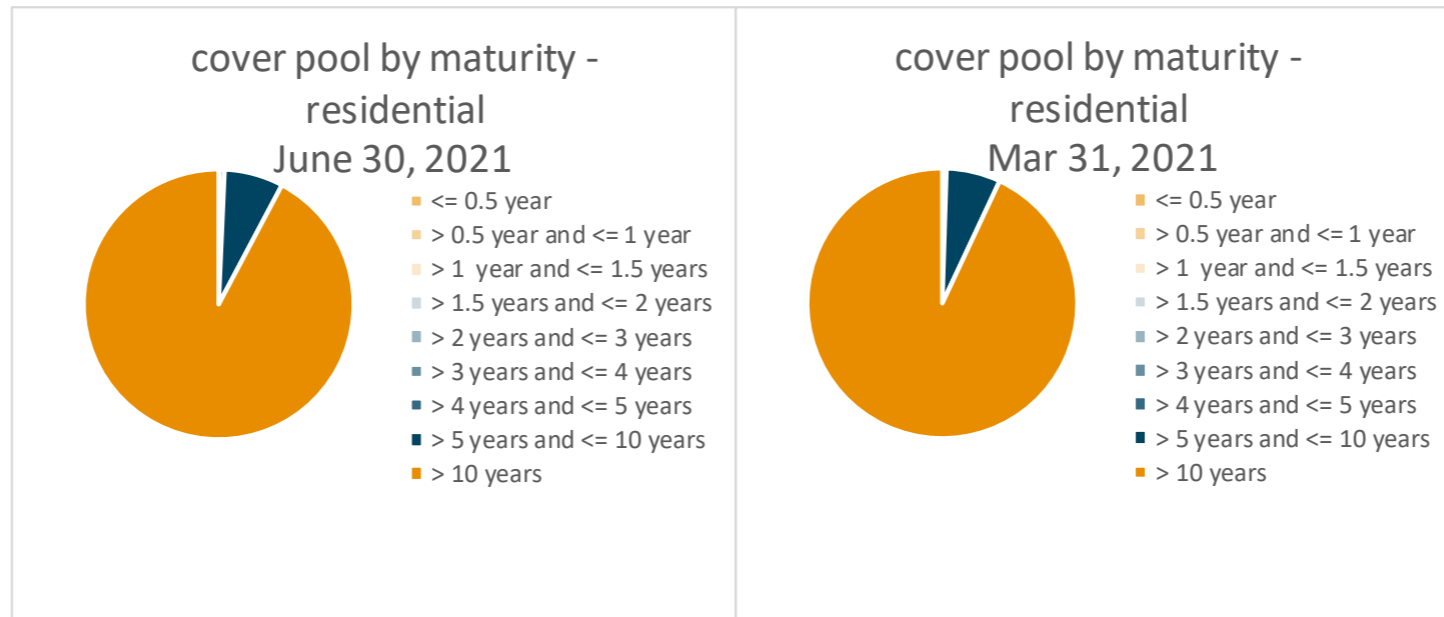
in the category loan to value >60% only the cover pool eligible part up to 60% is reported

Maturity of cover assets - residential



time to maturity of the ecological ESG Pfandbrief related residential cover assets

	June 30, 2021	Mar 31, 2021
maturity:	cover pool	cover pool
<= 0.5 year	190,226	527,349
> 0.5 year and <= 1 year	136,199	0
> 1 year and <= 1.5 years	0	136,569
> 1.5 years and <= 2 years	372,695	0
> 2 years and <= 3 years	328,783	706,181
> 3 years and <= 4 years	292,200	292,200
> 4 years and <= 5 years	6,500,498	3,463,535
> 5 years and <= 10 years	79,239,724	67,119,252
> 10 years	1,034,084,519	962,865,187



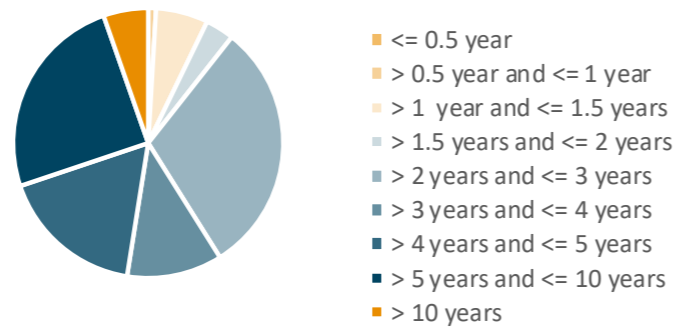
Maturity of cover assets - commercial



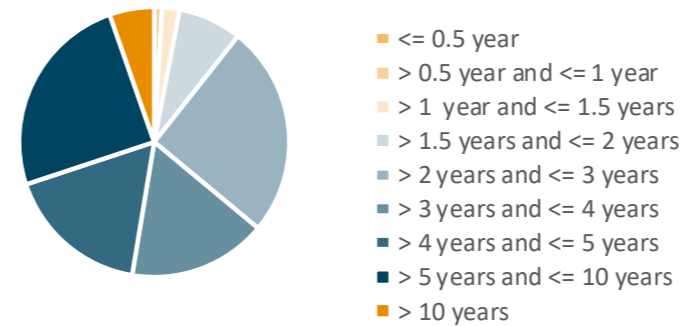
time to maturity of the ecological ESG Pfandbrief related commercial cover assets

	June 30, 2021	Mar 31, 2021
maturity:	cover pool	cover pool
<= 0.5 year	0	0
> 0.5 year and <= 1 year	7,140,000	7,140,000
> 1 year and <= 1.5 years	47,967,446	16,146,421
> 1.5 years and <= 2 years	26,321,911	58,544,891
> 2 years and <= 3 years	233,293,843	194,767,319
> 3 years and <= 4 years	87,606,424	127,431,478
> 4 years and <= 5 years	132,784,907	132,784,907
> 5 years and <= 10 years	189,881,907	189,881,907
> 10 years	41,125,000	41,125,000

cover pool by maturity - commercial
June 30, 2021



cover pool by maturity - commercial
Mar 31, 2021

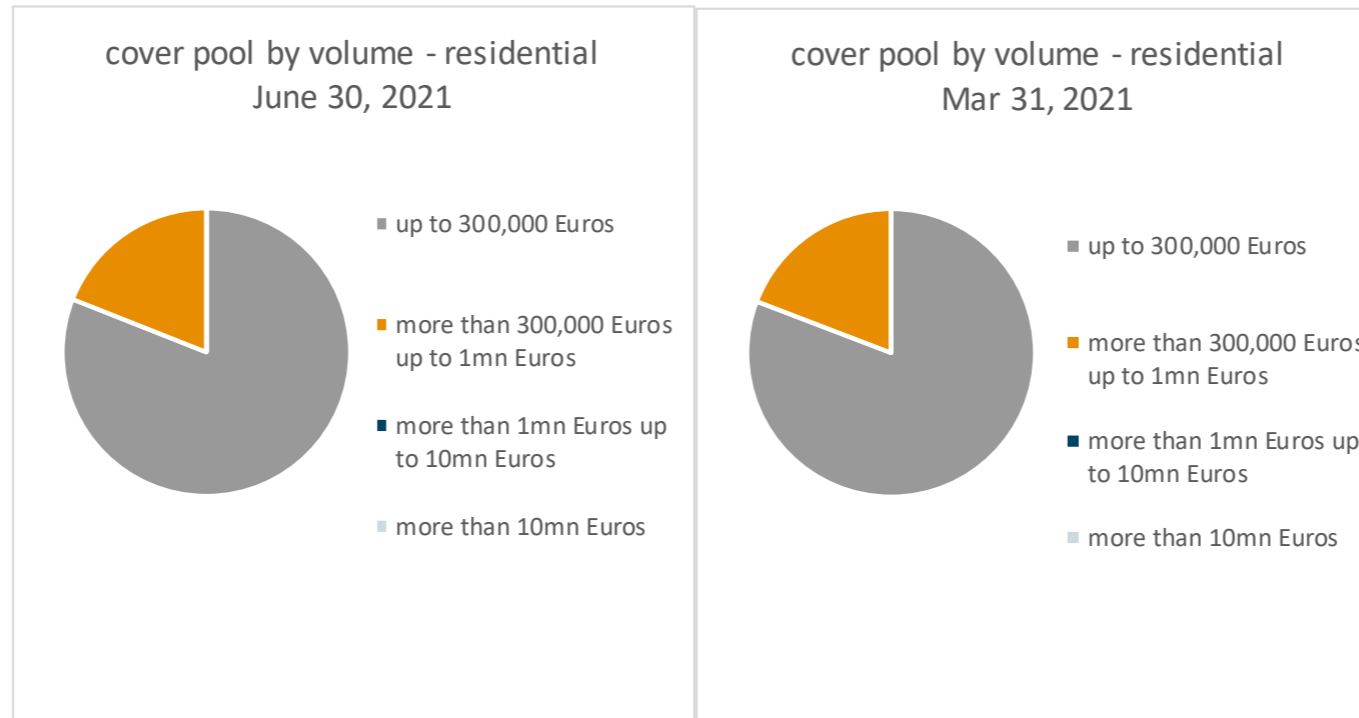


Mortgage loans by volume - residential



residential mortgage loans used as cover assets according to their amount in tranches

	June 30, 2021			Mar 31, 2021		
	€ thousand	in %	Number of loans	€ thousand	in %	Number of loans
up to 300,000 Euros	908,098	81.00	5,252	836,563	80.82	4,843
more than 300,000 Euros up to 1mn Euros	213,047	19.00	542	198,547	19.18	503
more than 1mn Euros up to 10mn Euros	0	0.00	0	0	0.00	0
more than 10mn Euros	0	0.00	0	0	0.00	0
Total	1,121,145	100.00	5,794	1,035,110	100.00	5,346



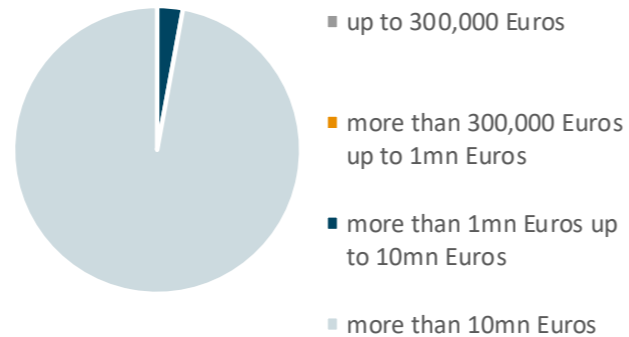
Mortgage loan by volume - commercial



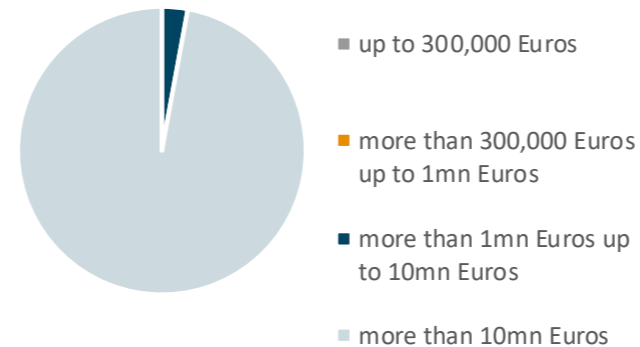
commercial mortgage loans used as cover assets according to their amount in tranches

	June 30, 2021			Mar 31, 2021		
	€ thousand	in %	Number of loans	€ thousand	in %	Number of loans
up to 300,000 Euros	0	0.00	0	0	0.00	0
more than 300,000 Euros up to 1mn Euros	0	0.00	0	0	0.00	0
more than 1mn Euros up to 10mn Euros	22,198	2.90	3	22,237	2.90	3
more than 10mn Euros	743,924	97.10	27	745,585	97.10	27
Total - all states	766,121	100.00	30	767,822	100.00	30

cover pool by volume - commercial
June 30, 2021



cover pool by volume - commercial
Mar 31, 2021



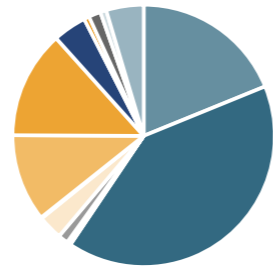
Mortgage loans by region - residential



residential cover assets of the ecological ESG Pfandbrief according to their region

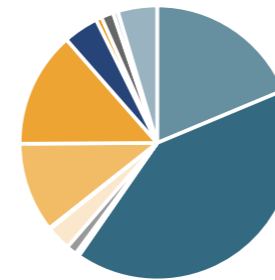
Germany	June 30, 2021		Mar 31, 2021	
	€	in %	€	in %
Baden-Württemberg	210,459,168	18.77	192,923,542	18.64
Bavaria	453,509,992	40.45	422,218,396	40.79
Berlin	3,505,919	0.31	3,275,244	0.32
Brandenburg	1,460,320	0.13	952,720	0.09
Bremen	554,772	0.05	555,040	0.05
Hamburg	13,719,374	1.22	12,592,112	1.22
Hesse	33,612,149	3.00	29,777,475	2.88
Mecklenburg-Western Pomerania	1,552,862	0.14	1,467,798	0.14
Lower Saxony	120,379,962	10.74	108,774,118	10.51
North Rhine-Westphalia	148,464,609	13.24	140,592,626	13.58
Rhineland-Palatinate	46,160,603	4.12	42,694,911	4.12
Saarland	7,292,293	0.65	6,986,144	0.67
Saxony	16,552,476	1.48	14,738,005	1.42
Saxony-Anhalt	8,365,601	0.75	6,133,472	0.59
Schleswig-Holstein	51,558,282	4.60	47,619,229	4.60
Thuringia	3,996,461	0.36	3,809,442	0.37
Total - all states	1,121,144,845	100.00	1,035,110,273	100.00

cover pool residential by region, 30/06/2021



- Baden-Württemberg
- Bavaria
- Berlin
- Brandenburg
- Bremen
- Hamburg
- Hesse
- Mecklenburg-Western Pomerania
- Lower Saxony
- North Rhine-Westphalia
- Rhineland-Palatinate
- Saarland
- Saxony
- Saxony-Anhalt
- Schleswig-Holstein

cover pool residential by region, 31/03/2021



- Baden-Württemberg
- Bavaria
- Berlin
- Brandenburg
- Bremen
- Hamburg
- Hesse
- Mecklenburg-Western Pomerania
- Lower Saxony
- North Rhine-Westphalia
- Rhineland-Palatinate
- Saarland
- Saxony
- Saxony-Anhalt
- Schleswig-Holstein

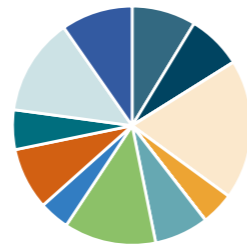
Mortgage loans by region - commercial



commercial cover assets of the ecological ESG Pfandbrief according to their region

Germany	June 30, 2021		Mar 31, 2021	
	€	in %	€	in %
Baden-Württemberg	0	0.00	0	0.00
Bavaria	66,478,008	8.68	66,621,741	8.68
Berlin	56,830,907	7.42	56,830,907	7.40
Brandenburg	0	0.00	0	0.00
Bremen	0	0.00	0	0.00
Hamburg	0	0.00	0	0.00
Hesse	145,178,489	18.95	145,178,489	18.91
Mecklenburg-Western Pomerania	0	0.00	0	0.00
Lower Saxony	0	0.00	0	0.00
North Rhine-Westphalia	34,183,750	4.46	34,183,750	4.45
Rhineland-Palatinate	0	0.00	0	0.00
Saarland	0	0.00	0	0.00
Saxony	0	0.00	0	0.00
Saxony-Anhalt	0	0.00	0	0.00
Schleswig-Holstein	0	0.00	0	0.00
Thuringia	0	0.00	0	0.00
Austria	56,100,000	7.32	56,100,000	7.31
France	95,530,498	12.47	96,081,025	12.51
Luxembourg	31,400,000	4.10	31,400,000	4.09
Spain	64,176,000	8.38	64,176,000	8.36
The Netherlands	41,125,000	5.37	41,125,000	5.36
United Kingdom	100,917,600	13.17	100,917,600	13.14
USA	74,201,186	9.69	75,207,411	9.79
Total - all states	766,121,438	100.00	767,821,922	100.00

cover pool commercial by region, 30/06/2021



- Baden-Württemberg
- Bavaria
- Berlin
- Brandenburg
- Bremen
- Hamburg
- Hesse
- Mecklenburg-Western Pomerania
- Lower Saxony
- North Rhine-Westphalia
- Rhineland-Palatinate
- Saarland
- Saxony
- Saxony-Anhalt
- Schleswig-Holstein
- Thuringia
- Austria
- France
- Luxembourg
- Spain
- The Netherlands
- United Kingdom
- USA

cover pool commercial by region, 31/03/2021



- Baden-Württemberg
- Bavaria
- Berlin
- Brandenburg
- Bremen
- Hamburg
- Hesse
- Mecklenburg-Western Pomerania
- Lower Saxony
- North Rhine-Westphalia
- Rhineland-Palatinate
- Saarland
- Saxony
- Saxony-Anhalt
- Schleswig-Holstein
- Thuringia
- Austria
- France
- Luxembourg
- Spain
- The Netherlands
- United Kingdom
- USA



Münchener Hypothekenbank eG

Karl-Scharnagl-Ring 10

D-80539 München

Telephone: +49-89-5387-0

Telefax: +49-89-5387-77-5591

Reuters: MHB01

Internet: <http://www.muenchenerhyp.de>

Treasury – Debt Investor Relations

Rafael Scholz rafael.scholz@muenchenerhyp.de

Tel. +49-89-5387-88-5500*

Claudia Bärdges-Koch claudia.baerdges-koch@muenchenerhyp.de

Tel. +49-89-5387-88-5520*

* Phone calls will be recorded

Sustainability

Dr. Patrick Wellas patrick.wellas@muenchenerhyp.de

Tel. +49-89-5387-22-2040

DISCLAIMER

IMPORTANT: You must read the following before continuing. By listening and/or attending the presentation you are deemed to have taken notice of the following limitations.

Münchener Hypothekbank eG (the “Company”) prepared this document solely for use in connection with this presentation. This presentation does not constitute an offer or invitation to subscribe for, or purchase, any securities issued by the Company and neither this presentation nor anything in it shall form the basis of, or be relied upon in connection with, any contract or commitment whatsoever. This presentation is furnished solely for your information, should not be treated as giving investment advice and may not be printed, downloaded or otherwise copied or distributed.

The information contained in this presentation is not for publication, release or distribution in the United States of America (the “United States”), Australia, Canada or Japan and, subject to certain exceptions, the securities referred to herein may not be offered or sold in the United States, Australia, Canada or Japan or to, or for the account or benefit of, any U.S. person, or any national, resident or citizen of Australia, Canada or Japan. The securities referred to herein may not be offered or sold except pursuant to registration under the U.S. Securities Act of 1933, as amended (the “Securities Act”) or pursuant to an exemption from, or in a transaction not subject to, the registration requirements of the Securities Act. The offer and sale of the securities referred to herein has not been and will not be registered under the Securities Act. There will be no public offer of the securities referred to herein in the United States. The securities referred to herein will be offered only outside the United States in reliance on Regulation S of the Securities Act.

The securities referred to herein are not intended to be offered, sold or otherwise made available to and should not be offered, sold or otherwise made available to any retail investor in the European Economic Area (“EEA”). For these purposes, a retail investor means a person who is one (or more) of: (i) a retail client as defined in point (11) of Article 4(1) of Directive 2014/65/EU (as amended, “MiFiD II”) or (ii) a customer within the meaning of Directive (EU) 2016/97 (as amended, the “Insurance Distribution Directive”), where that customer would not qualify as a professional client as defined in point (10) of Article 4(1) of MiFiD II. No key information document within the meaning of Regulation (EU) No 1286/2014 (as amended the “PRIIPs Regulation”) has been prepared.

This presentation is directed at and/or for distribution in the United Kingdom only to (i) persons who have professional experience in matters relating to investments falling within article 19(5) of the Financial Services and Markets Act 2000 (Financial Promotion) Order 2005 (the “Order”) or (ii) high net worth entities falling within article 49(2)(a) to (d) of the Order (all such persons are referred to herein as “relevant persons”). This presentation is directed only at relevant persons. Any person who is not a relevant person should not act or rely on this presentation or any of its contents. Any investment or investment activity to which this presentation relates is available only to relevant persons and will be engaged in only with relevant persons.

Neither the Company nor any of its directors, officers, employees and advisors nor any other person shall have any liability whatsoever for any direct or indirect losses arising from any use of this presentation. While the Company has taken all reasonable care to ensure that the facts stated in this presentation are accurate and that the opinions contained in it are fair and reasonable, this presentation is selective in nature.

Information contained in this presentation concerning the future development of the Company consists purely of forecasts and assessments and not of definitive facts. These forward-looking statements are based on discernible information, facts and expectations available at the time. They can, therefore, only claim validity up to the date of their publication. Since forward-looking statements are by their nature subject to uncertainties and imponderable risk factors – such as changes in underlying economic conditions – and rest on assumptions that may not occur, or may occur differently, it is possible that the Company’s actual results and development may differ materially from the forecasts. The Company is under no obligation to update forward-looking statements or adapt them to subsequent events or developments. Accordingly, it neither explicitly nor implicitly accepts liability, nor gives any guarantee for the actuality, accuracy or completeness of this data and information.

Any opinions expressed in this presentation are subject to change without notice and neither the Company nor any other person is under any obligation to update or keep current the information contained in this presentation. Persons who intend to purchase securities in the proposed offering are advised to base any decision about such purchase, or solicitation of an offer to purchase, on the information contained in the prospectus prepared by the Company in relation to the securities, which may be different from the information contained in this presentation. Accordingly, any investment decision to purchase or subscribe for any securities of the Company should be made solely on the basis of the information that is contained in the prospectus and no reliance is to be placed on any representations other than those that are contained in the prospectus which, should the Company pursue the transaction, will be available from the Company and published on the website of the Luxembourg Stock Exchange (www.bourse.lu).